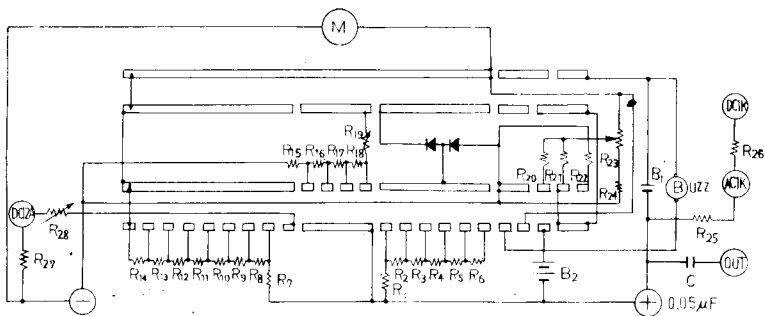


SCHEMATIC DIAGRAM



PARTS LIST

<table style="width: 100%; border-collapse: collapse;"> <tr><td style="width: 10%;">R 1</td><td style="width: 15%;">27 K</td><td style="width: 10%;">ohm</td><td style="width: 75%;"></td></tr> <tr><td>R 2</td><td>97.5 K</td><td></td><td></td></tr> <tr><td>R 3</td><td>195 K</td><td></td><td></td></tr> <tr><td>R 4</td><td>975 K</td><td></td><td></td></tr> <tr><td>R 5</td><td>1.95 M</td><td></td><td></td></tr> <tr><td>R 6</td><td>3.25 M</td><td></td><td></td></tr> <tr><td>R 7</td><td>7 K</td><td>pot</td><td></td></tr> <tr><td>R 8</td><td>22.5 K</td><td></td><td></td></tr> <tr><td>R 9</td><td>45 K</td><td></td><td></td></tr> <tr><td>R 10</td><td>225 K</td><td></td><td></td></tr> <tr><td>R 11</td><td>450 K</td><td></td><td></td></tr> <tr><td>R 12</td><td>2.25 M</td><td></td><td></td></tr> <tr><td>R 13</td><td>4.5 M</td><td></td><td></td></tr> <tr><td>R 14</td><td>7.5 M</td><td></td><td></td></tr> </table>	R 1	27 K	ohm		R 2	97.5 K			R 3	195 K			R 4	975 K			R 5	1.95 M			R 6	3.25 M			R 7	7 K	pot		R 8	22.5 K			R 9	45 K			R 10	225 K			R 11	450 K			R 12	2.25 M			R 13	4.5 M			R 14	7.5 M			<table style="width: 100%; border-collapse: collapse;"> <tr><td style="width: 10%;">R 15</td><td style="width: 15%;">1</td><td style="width: 10%;">ohm</td><td style="width: 75%;"></td></tr> <tr><td>R 16</td><td>9</td><td>ohm</td><td></td></tr> <tr><td>R 17</td><td>90</td><td>ohm</td><td></td></tr> <tr><td>R 18</td><td>9.9 K</td><td></td><td></td></tr> <tr><td>☆R 19</td><td>5 K</td><td></td><td>pot</td></tr> <tr><td>☆R 20</td><td>300 K</td><td></td><td></td></tr> <tr><td>☆R 21</td><td>27 K</td><td></td><td></td></tr> <tr><td>☆R 22</td><td>340</td><td>ohm</td><td></td></tr> <tr><td>☆R 23</td><td>10 K</td><td>ohm</td><td>ADJ</td></tr> <tr><td>☆R 24</td><td>15 K</td><td></td><td></td></tr> <tr><td>R 25</td><td>6.5 M</td><td></td><td></td></tr> <tr><td>R 26</td><td>8.5 M</td><td></td><td></td></tr> <tr><td>R 27</td><td>0.01</td><td>ohm</td><td></td></tr> <tr><td>☆R 28</td><td>5 K</td><td></td><td></td></tr> </table>	R 15	1	ohm		R 16	9	ohm		R 17	90	ohm		R 18	9.9 K			☆R 19	5 K		pot	☆R 20	300 K			☆R 21	27 K			☆R 22	340	ohm		☆R 23	10 K	ohm	ADJ	☆R 24	15 K			R 25	6.5 M			R 26	8.5 M			R 27	0.01	ohm		☆R 28	5 K		
R 1	27 K	ohm																																																																																																															
R 2	97.5 K																																																																																																																
R 3	195 K																																																																																																																
R 4	975 K																																																																																																																
R 5	1.95 M																																																																																																																
R 6	3.25 M																																																																																																																
R 7	7 K	pot																																																																																																															
R 8	22.5 K																																																																																																																
R 9	45 K																																																																																																																
R 10	225 K																																																																																																																
R 11	450 K																																																																																																																
R 12	2.25 M																																																																																																																
R 13	4.5 M																																																																																																																
R 14	7.5 M																																																																																																																
R 15	1	ohm																																																																																																															
R 16	9	ohm																																																																																																															
R 17	90	ohm																																																																																																															
R 18	9.9 K																																																																																																																
☆R 19	5 K		pot																																																																																																														
☆R 20	300 K																																																																																																																
☆R 21	27 K																																																																																																																
☆R 22	340	ohm																																																																																																															
☆R 23	10 K	ohm	ADJ																																																																																																														
☆R 24	15 K																																																																																																																
R 25	6.5 M																																																																																																																
R 26	8.5 M																																																																																																																
R 27	0.01	ohm																																																																																																															
☆R 28	5 K																																																																																																																
<p>M: Meter, 33 DC microamps f. s.</p> <p>RECT: Rectifier</p> <p>BUZZ: Buzzer</p> <p>C: 0.05 μF, 600 WVDC</p> <p>B1: 1.5V Battery : Burgess Z, Eveready 912, etc.</p> <p>B2: 15V Battery : Burgess Y10, Eveready 504, etc.</p>																																																																																																																	

☆ Adjustment

Printed in Japan