

SA9083

TELEPHONE INSTALLATION TESTER



	Components of the product supplied. Description.	Visually inspect for clean unmarked appearance and for the following.
1.	SA9083 Telephone Installation Tester.	Calibration accuracy within the nominal 10% limits detailed on page 2 (there is no published specification). Operational integrity.
2.	Set of 3 Test Leads (red, black and green).	Electrical continuity.
3.	3 Crocodile Clips (2 black, 1 red).	Electrical continuity.
4.	2 Green Spike Prods.	Electrical continuity.
5.	6 R6 1.5V Alkaline Batteries.	Correct type.
6.	Certificate of Conformity.	Standard Robin form with correct serial number.
7.	Instruction Manual.	Correct Instruction Manual.
8.	Warranty Registration Card.	Standard Robin Warranty Registration Card.
9.	Yellow Carrying Case containing all the above.	Correct case. Closure function.
10.	Carton.	Correct carton with current address, logos and references

SA9083 Telecom Tester

TEST	TEST POINTS	RANGE	READING	APPLIED VALUE LIMITS (NOMINAL 10% ACCURACY)
V dc	A-B	5 V	5.0 V	4.50 - 5.50 V
		50 V	50 V	45.0 - 55.0 V
		250 V	50 V	45.0 - 55.0 V
			250 V	180.0 - 220.0 V
Batt B	B-E	50 V	50 V	45.0 - 55.0 V dc
V ac	A-B	250 V	200 V	180 - 220 V 50Hz
mA / A dc	A-B	50 mA	50 mA	45.0 - 55.0 mA
		500 mA	500 mA	450.0 - 550.0 mA
		5.0 A	5.0 A	4.50 - 5.50 A
Ω Loop	A-B	x1	100 Ω	90.0 - 110.0 Ω
			1.0 kΩ	0.90 - 1.10 kΩ
		x100	10.0 kΩ	9.00 - 11.00 kΩ
			100 kΩ	90.0 - 110.0 kΩ
Earth B	B-E	x 100	100 kΩ	90.0 - 110.0 kΩ
M Ω	B-E	MΩ	0.1 MΩ	0.09 - 0.10 MΩ
			1.0 MΩ	0.90 - 1.10 MΩ

Authorised:



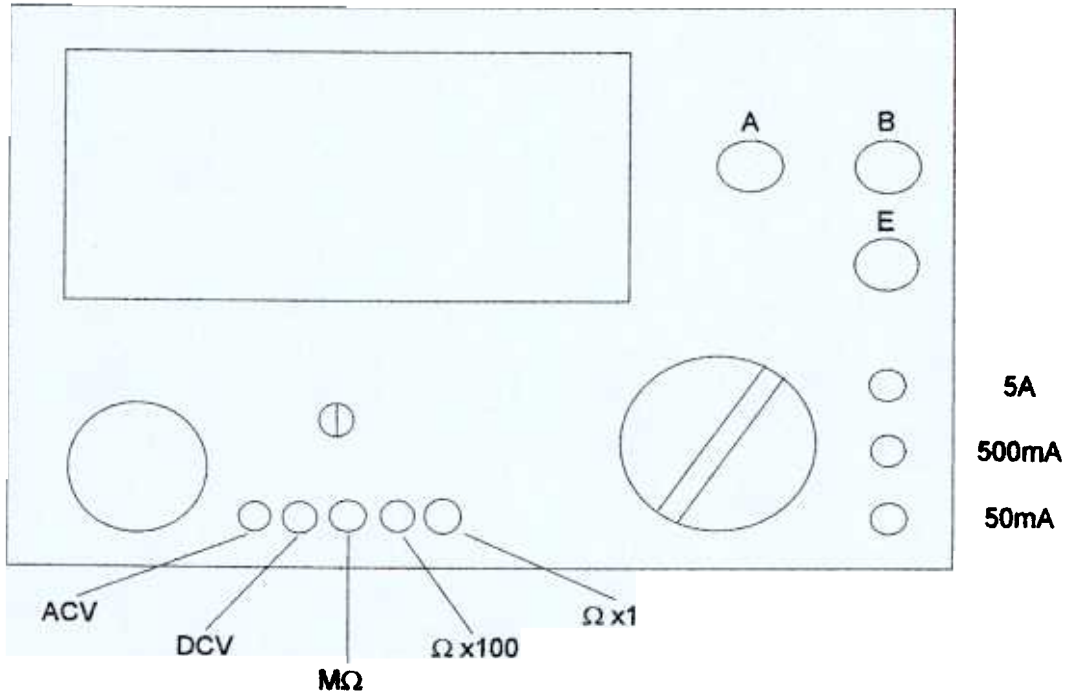
 Service Manager

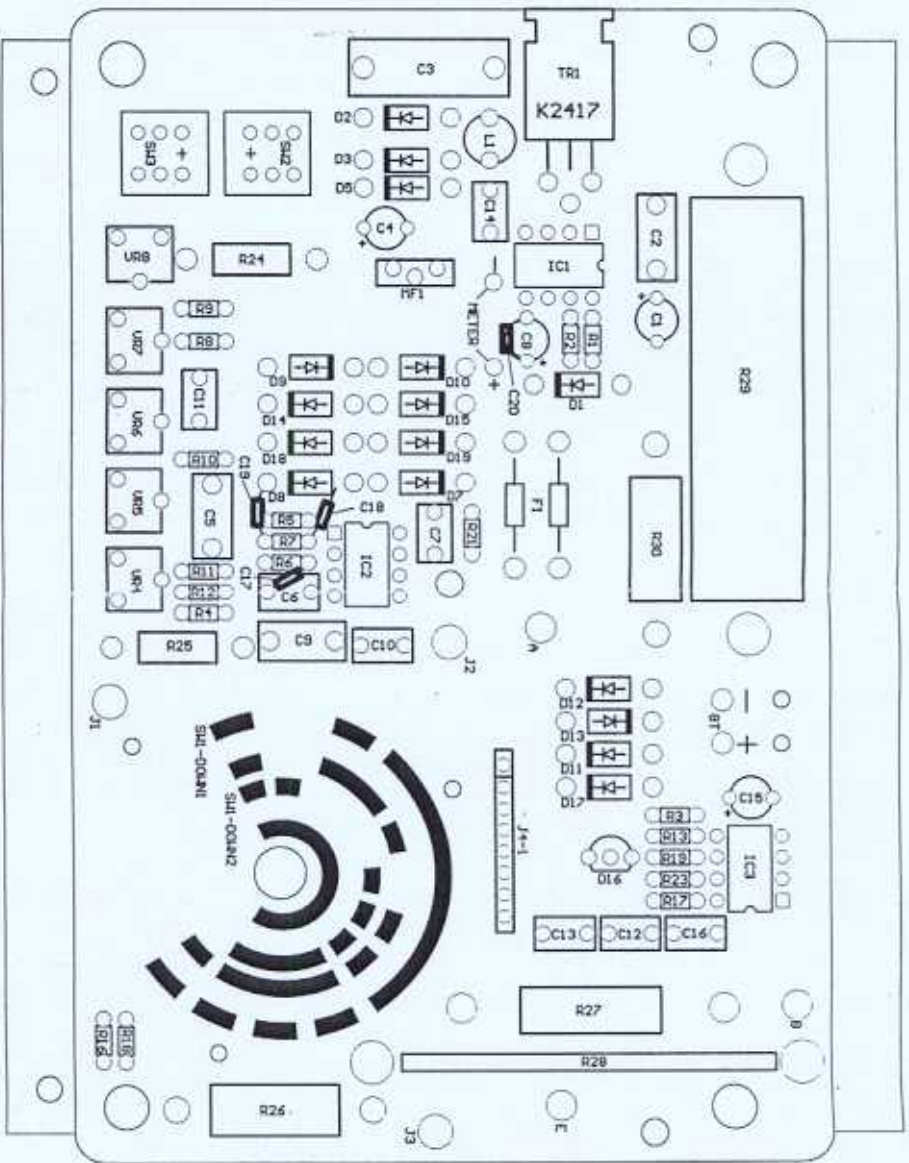
Date:

27/01/2000

ROBIN SA9083

ADJUSTMENT POINTS





50-1409

記号	数	記	事	担当	日付	承認

50-1409 設計書

設計者: 田中 一郎

承認者: 佐藤 健二

作成日: 2023年10月15日

図面番号: 50-1409-01

部品名: 電源回路基板

仕様: 定格電圧 5V, 定格電流 100mA

材料: FR-4

寸法: 45mm x 60mm

重量: 1.2g

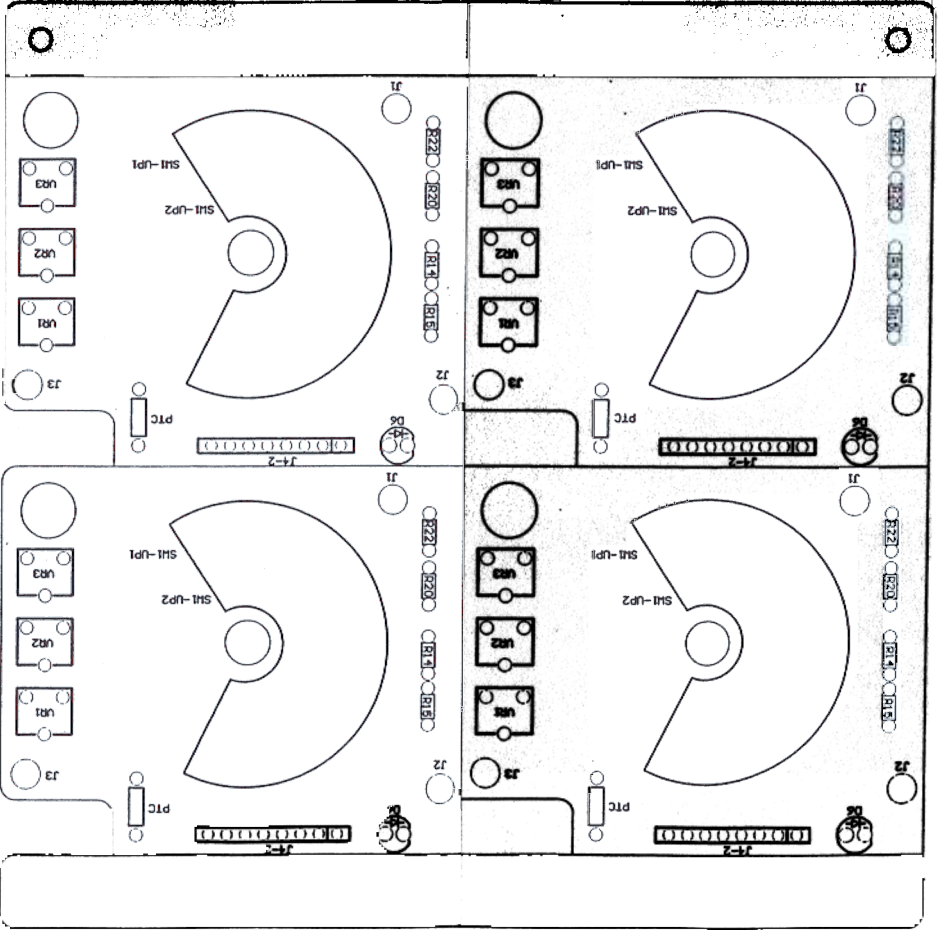
製造方法: 波状炉

検査方法: 目視検査

保管場所: 常温乾燥

廃棄方法: 資源回収

50-1419



1007年10月15日

口付

※製造注意

品

0~20 ±0.1

記号数	記事	担当	日付	承認

Issued	1997.12.15	PART LIST	Approved	Checked	Prepared
Revised	1998.02.26	SA9083			

SYM.	DESCRIPTION SPEC.	QUANT
C1,4,15	Electrolytic Cap. 22 μ 50VF	3
C2,5	Film Cap. 0.01 μ 400VF	2
C3	Film Cap. 0.22 μ 400VF	1
C6	Film Cap. 1 μ 50VJ	1
C7,10,11,12,13,14,16	Film Cap. 0.1 μ 50VJ	7
C8	Electrolytic Cap. 4.7 μ 25VK	1
C9	Film Cap. 0.22 μ 100VK	1
C17,18,19	Ceramic Cap. 470pF	3
C20	Ceramic Cap. 1000pF	1
D1,9,10,11,12,13,17	Silicon Diode 1N4448	7
D2	Switching Diode 1DL41	1
D3	Zener Diode 1BZ110	1
D5	Zener Diode HZ12A2	1
D6	LED TLUR-143	1
D16	Voltage Regulator NJU7201L12	1
R1	Metal Film Res. 1/6W3.3kF	1
R2	Metal Film Res. 1/6W18kF	1
R3	Metal Film Res. 1/6W82k \pm 1kF	1
R4	Metal Film Res. 1/6W1.91kF	1
R5,12	Metal Film Res. 1/6W100F	2
R6,7	Metal Film Res. 1/6W4.7kF	2
R8,9	Metal Film Res. 1/6W62F	2
R10,13	Metal Film Res. 1/6W270kF	2
R11	Metal Film Res. 1/6W24kF	1
R14	Metal Film Res. 1/6W2.4kF	1
R15,21	Metal Film Res. 1/6W10kF	2
R16,18	Metal Film Res. 1/6W124kF	2
R17		1
R19		1
R20		1
R22		1
R23		1
R24		1
R25		1
R26		1
R27	Wire Wound Res. 1W1F	1
R28	Manganese Wire 12m Ω (ϕ 1.5 \times 60)	1
R29	Cent Res. 15W20J	1
R30	Wire Wound Res. 3W3J	1
VR1	Metal Film Pot. 500 Ω	1
VR2,4	Metal Film Pot. 200 Ω	2
VR3,7	Metal Film Pot. 100 Ω	2
VR5,8	Metal Film Pot. 10k Ω	2
VR6	Metal Film Pot. 100k Ω	1
TR1	Transistor 2SK2417	1
L1	Inductor 470mHJ	1
IC1	IC NJM555D	1
IC2	IC Ope. Amp. AD705JN(or LT1097CN8)	1
IC3	IC Ope. Amp. NJM2904M	1
MF1	EMI Filters DS3110-91D223S50	1
F1,PTC	Resistor 1/4W 0 Ω	3
J1,2,3		3
J4		1
BT		6
METER		1
SW1		1
SW2,3	SPPH13-LB	2
A,B,E		1

A